



Canadian Food  
Inspection Agency

Agence canadienne  
d'inspection des aliments

**Canadian Food Inspection Agency**



# Emergency Preparedness at CFIA

**Presentation to FFIGS  
May 4, 2016**

**JoAnne Ford, Area Emergency Coordinator**

**Canada**

# What is an emergency?



# CFIA Emergency Definition

*An Emergency is:*

**“An abnormal situation which, to limit damage to persons, property, or the environment, requires prompt action beyond normal procedures.”**

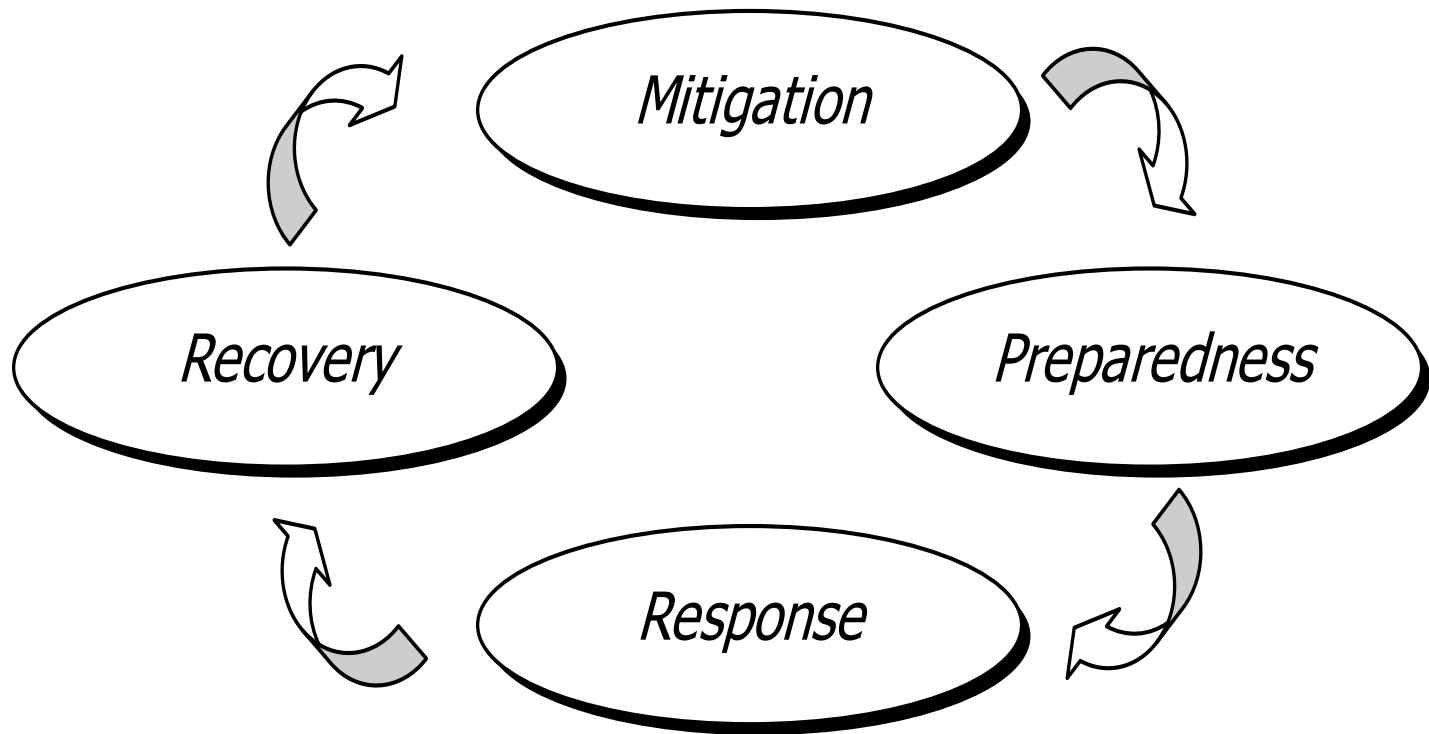
## **Mandated Emergencies:**

- *Animal Health*
- *Plant Health*
- *Food Safety*

## **Non-Mandated Emergencies:**

- *Infrastructure based*
- *Other public welfare based*

## The Four Phases of Emergency Management



# Emergency Preparedness

- Identify potential hazards
- Develop emergency plans
  - Mandate and authorities
  - Regulations and policy directives
- Procedures, resources and equipment
- Define response structure
  - Incident Command System
- Training
- Exercises and Evaluation
  - Refine plans and procedures



# Emergency Planning in Canada: All Hazards Approach

- an all-hazards approach to address both natural and human-induced hazards and disasters
- Importance of assessing vulnerability to a hazard
- Impact and potential mitigation measures
- Risk-based approach
- Presence of a hazard constitutes a risk



# Federal Emergency Response Plan

The plan (FERP) harmonizes federal response efforts with those of provincial/territorial governments, non-governmental organizations and the private sector.

CFIA role is defined under Emergency Support Functions (ESF) that support this plan.

- Primary department/agency responding to mandated emergencies
- Supporting department/agency that provides general or specialized assistance to primary

# CFIA Emergencies

- Lead role in Mandated Emergencies
  - Food Safety
  - Animal Health
  - Plant Health
  - Feed Safety
  - Infrastructure-related emergency
- CFIA President may officially “declare” an emergency for emergency procurement and/or an emergency funding mechanism to access emergency funding
- Joint AAFC/CFIA role in non-mandated emergencies (e.g. flood, ice storm, earthquake)
  - Emergency Support Functions (ESFs) under the Federal Emergency Response Plan (FERP)



# Federal Emergency Response Plan

- CFIA lead role for ESF 3: agriculture and agri-food emergencies under federal mandate or exceeding provincial capacity.
- CFIA supporting role for:
  - ESF 5: Public Health and Essential Human Services
  - ESF 6: Environment
  - ESF 8: Law Enforcement
  - ESF 9: International Coordination
  - ESF 11: Logistics and Operations Management
  - ESF 12: Communications
  - ESF 13: Border Services



# Coordination with Government Operations Centre

## Government Operations Centre (GOC)

- Coordinates the overall response
- Assists with the flow of information
- Assists with resources requests

## How does CFIA work with the GOC

- Sharing of Situation Reports
- Participate in response related meetings
- Provide Liaison Officer to the GOC

# Emergency Preparedness Foundations: Food Safety

## CFIA Framework for Food Safety Investigation and Response:

- Guidance for operational activities relating to food safety investigation
- Triggered by consumer/trade complaints, inspection or audit findings, laboratory results and referrals from other regulatory authorities
- While food safety investigation procedure and associated processes are consistent regardless of the trigger or event, the governance and ***management structures may be different, depending on the complexity, magnitude, and potential impact of the event***

# Emergency Preparedness Foundations: Food Safety

## Food Illness Outbreak Response Protocol

- Guiding principles and operating procedures for identification and response to multi-jurisdictional food-borne illness outbreaks
  - enhance collaboration and coordination among partners,
  - establish clear lines of communication, and
  - improve the efficiency and effectiveness of response, thereby protecting the health of Canadians.
- designed to be used in response to illness outbreaks with a suspected or confirmed link to food consumed

# Emergency Preparedness Foundations: Animal Health

## Reportable Animal Diseases

- significant importance to human or animal health or to the Canadian economy

## *Animal Health*

- Animal Health Functional Plan
- Hazard specific plans
  - Notifiable Avian Influenza
  - Foot and Mouth Disease Hazard Specific Plan

## *Meat Hygiene*

- Manual of Procedures: Chapter 9 Emergency Situations

# Emergency Preparedness Foundations: Plant Health

## Canadian Phytosanitary Policy for the Notification of Non-Compliance and Emergency Action (D-01-06)

- Notification between official national plant protection organizations (NPPOs)
  - Lists of pests regulated by Canada
- When shipment does not meet import requirements and may require prompt phytosanitary actions
  - Inspection, testing, destruction, surveillance, treatment
- Surveillance and monitoring for plant pests
  - Discovery of infestation may prompt emergency actions to control or eradicate
    - Asian Long-horned Beetle

# Emergency Response Activation Criteria

- Significant number of people, animals, plants, or resources at risk
- Response coordination required because of a large or widespread event, multiple emergency sites, or several responding agencies
- Significant media and/or public interest
- Resource coordination required because of limited local resources or significant need for outside resources; and
- Uncertain conditions
  - Possible event escalation
  - Unknown extent of damage
  - Potential threats to people, property, animal or plant health, or the environment

# Emergencies at the CFIA

Some examples include:

Avian influenza outbreaks  
in BC and Ontario



ALHB detection near  
Pearson Airport



Listeria outbreak linked to  
contaminated deli meats





# CFIA Emergency Response Plan

- **Describes the foundations of emergency management in the CFIA.**
- **Includes; the operational framework, response process, and response structure.**
- **Forms the basis for the establishment of all other emergency plans for the Agency.**
- ***CFIA's Emergency Response Plan is based on the Incident Command System (ICS)***

# CFIA Emergency Plans

PROCEDURES

## CFIA Emergency Response Plan

Describes the roles and responsibilities, operational framework and response process in an emergency

### Examples:

Animal Health Functional Plan

Plant Pest Functional Plan

Food Safety Emergency Response Functional Plan

## Functional Plans

## Hazard Specific Plans

### Examples:

Asian Long Horned Beetle Eradication Plan

Notifiable Avian Influenza Hazard Specific Plan



# Response Structure

## *Incident Command System (ICS)*

*A system that organizes the following into a common structure to aid in the management of resources:*

- *Facilities*
- *Equipment*
- *Personnel*
- *Procedures*
- *Communications*

*Widely applicable/adaptable:*

- *scaled up/down, fully/partially activated*

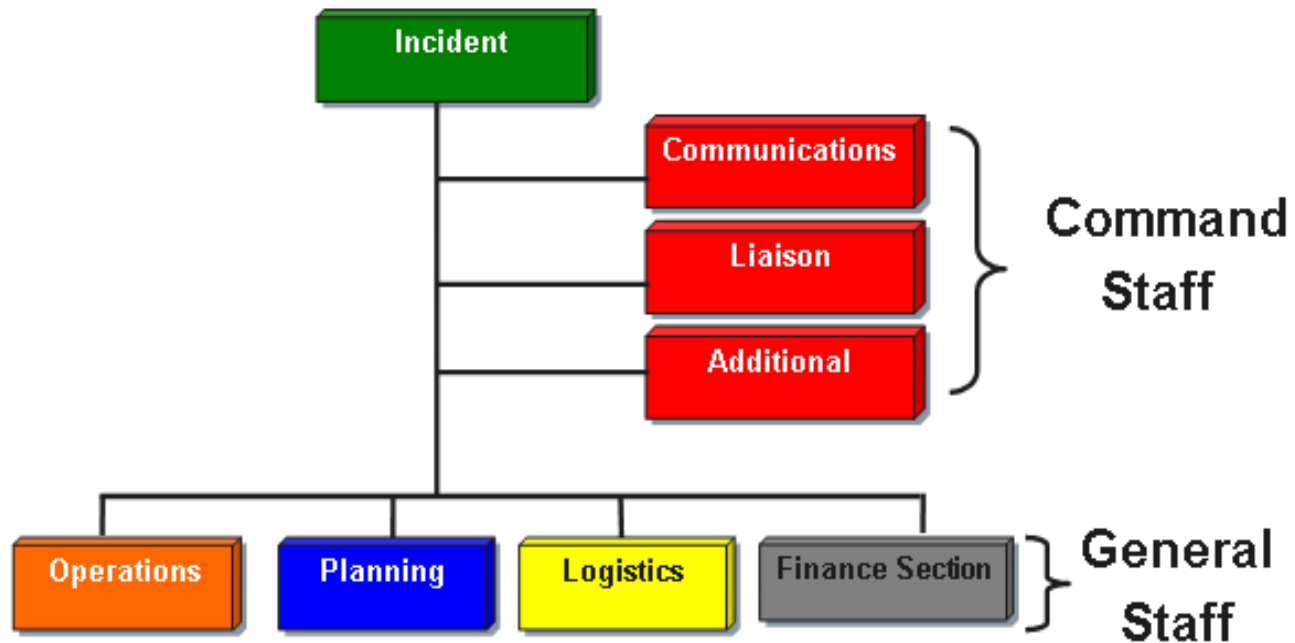
*Applicable across disciplines:*

- *Used by various levels of government as well as private-sector*



# ICS: Key Functional Areas

5 Areas: Command, Operations, Planning, Logistics, Finance



# ICS Management Functions

The ICS organization is comprised of five functional groups:

- **COMMANDER** – Who's in charge?
- **COMMAND** – Provide support to the Incident Commander.
- **OPERATIONS** – Identifies and carries out response actions.
- **PLANNING** – What needs to be done and how it will be done?
- **LOGISTICS** – What resources are required to support the response (e.g. meals, shelter, equipment).
- **FINANCE/ADMIN** – What expenses need to be tracked & monitored.

# Emergency Operations Centre (EOC)

Pre-determined locations with infrastructure for management, coordination and decision-making

Support for field activities

Government of Canada (GOC)



CFIA National EOC



CFIA Area EOC

Provincial EOC

(Ontario)



Ministry EOC



Questions?



Canada